



# Green Sky Thinking 17 – 22 Sept



Get the expert view on low-carbon  
building and retrofit



[greenskythinking.org.uk](http://greenskythinking.org.uk)

“Green Sky Thinking gives you an inside view from top experts and industry leaders on what skills, solutions and networks are needed to seize new business opportunities in the fast-expanding area of ‘green growth’.

Green Sky Thinking profiles people, companies and organisations that are leading the way in low-carbon building, and will generate new business relationships in an informal yet inspirational atmosphere.”

Victoria Thornton HonFRIBA,  
Founding Director, Open-City

[greenskythinking.org.uk](http://greenskythinking.org.uk)

## What is Green Sky Thinking?

Legislation and regulation have set expectations and standards for energy efficient buildings, but embedding low-carbon solutions remains a pressing challenge for the industry, its clients and customers. How can we really make sustainability part of everyday working practice across the industry?

Open-City’s **Green Sky Thinking** will provide some of the answers through a London-wide programme over **17-22 Sept** highlighting new thinking, practice and solutions that show how to ‘design in’ sustainability.

**Green Sky Thinking** supports sustainable solutions by enabling the industry and its clients – including planners, developers, housing associations, property managers, the public sector and homeowners – to

- find out about sustainable and retrofit solutions that really work
- learn how to make the most of business opportunities around ‘green growth’
- understand the latest innovations and technologies
- hear direct from, and talk face-to-face with, leaders in new build and retrofit

**Green Sky Thinking**, coinciding with World Green Building Week, helps built environment professionals keep one step ahead through informal daytime and evening talks, seminars, roundtable discussions, building/site tours, demonstrations and many other activities across London.

In this booklet you can find full listings by theme and date – but check [greenskythinking.org.uk](http://greenskythinking.org.uk) for the most up to date listings for all events. Register now at [green@open-city.org.uk](mailto:green@open-city.org.uk)



**IMPORTANT NOTE ON REGISTERING/ BOOKING FOR GREEN SKY THINKING:**  
As spaces are limited, we recommend you register in advance by emailing Open-City at [green@open-city.org.uk](mailto:green@open-city.org.uk) or call Sarah Yates on 020 7380 0412. Please indicate CLEARLY which events you are interested in and provide a daytime phone number in case we need to contact you.

For some events booking – either through Open-City or event hosts – is ESSENTIAL and where required this is indicated in the individual entry or section. Spaces are limited and are on a strictly first come, first served basis. Open-City regrets that we cannot guarantee availability of places. As places are restricted please ensure that you attend.

# What does Green Sky Thinking cover?

**Green Sky Thinking** tackles some of the most pressing issues around low-carbon building and retrofit including

- Why green building and retrofit matter in a recession
- How to communicate the value of green/retrofit to clients: both domestic and commercial
- How to create and manage green commercial buildings successfully
- Understanding the wider context: sustainable design in neighbourhood planning and localism
- Products and technologies – who recommends what and why?

The programme explores these issues through the following themes including:

## *Who is driving sustainable building and retrofit?*

Leading green build and retrofit professionals sharing their knowledge and expertise in an informal atmosphere via a series of daytime and evening 'open practices' and seminars – highlighting the business opportunities and challenges emerging in the fast-expanding area of low carbon building and retrofit. See pages 6–11.

## *What makes a sustainable building? Success stories from the commercial sector*

Talks and tours highlighting the factors for success behind key commercial and public new build and retrofit exemplars. These explore how green buildings can be developed, designed and managed to achieve long-term sustainability goals – and how they can drive behaviour change, sustainable communities, and green enterprise. See page 12.

## *What makes a sustainable neighbourhood?*

Walks, tours, presentations and practical exercises focusing on the wider context of how to create sustainable communities and places. See page 13.



## Programme listings by theme

Green Sky Thinking is a series of FREE events taking place from 17 to 22 Sept 2011. Each entry below contains the address, opening days and hours, access to visitors, prebooking details where relevant, amenities and transport.

Check our website [greenskythinking.org.uk](http://greenskythinking.org.uk) for the most up to date listings.

### Key to listings:

d = Partial access for people with disabilities

D = Access for people with disabilities

P = Parking available

R = refreshments

T = toilets

### IMPORTANT NOTE ON REGISTERING FOR EVENTS:

Registration in advance is advised – register by emailing [Open-City@open-city.org.uk](mailto:Open-City@open-city.org.uk) UNLESS OTHERWISE STATED in the individual entry.

Please indicate CLEARLY which events you are interested in and provide a daytime phone number in case we need to contact you.

**Booking** – either through Open-City or event hosts – is ESSENTIAL for some events and where required this is indicated in the individual entry. Spaces are limited and are on a strictly first come, first served basis. Open-City regrets that we cannot guarantee availability of places. As places are restricted please ensure that you attend.

Information in these listings is provided by contributors. Open-City has taken all reasonable care to verify the information provided.



### Who is driving sustainable building and retrofit? ('Open Practice')

#### AECOM

Level 3, Johnson Building, 77 Hatton Garden EC1N 8JS

Mon, 6.30pm – 8.30pm. Max 80 people. DRT

How can nature inspire new ways of thinking about urban design and development? Join us as we discuss how water-sensitive urban design and biomimicry are pushing innovation forward. Advance booking is essential for entry: email [green@open-city.org.uk](mailto:green@open-city.org.uk)  
**Tube: Farringdon, Chancery Lane; Rail: Farringdon**  
[www.aecom.com](http://www.aecom.com)

#### Aedas

5-8 Hardwick Street EC1R 4RG

Mon, 7.00pm – 9.00pm. Max 100 people. DRT

Aedas R&D invites you and your colleagues to a 'pecha kucha' and drinks reception at our offices in Clerkenwell. Participants in the Technology Strategy Board Building Performance Evaluation programme will be sharing their early findings and debating implication for policy and practice.

**Tube: Angel, Farringdon, Kings Cross; Rail: Farringdon, Kings Cross; Bus: 19, 38, 341, 153, 63**  
[www.aedas.com](http://www.aedas.com)

### Ann Bodkin Sustainability + Architecture

Meet at Roots and Shoots, Walnut Tree Walk, North Lambeth SE11 6DN

Mon, 2.00pm – 5.00pm. Max 20 in the group. Tour starts 2.00pm

'Up on the Roof': a living roof tour of North Lambeth, including roofs for bees, DIY community-built garage rooftops, artist's ecostructure, edible bike shed and the UK's largest green roof renewal housing project. Rooftop access involves climbing steps. Limited spaces – book to reserve place at [green@open-city.org.uk](http://green@open-city.org.uk)  
**Tube: Lambeth North, Waterloo; Bus: 59, 159, 3, 360, 507**  
[www.annbodkin.co.uk](http://www.annbodkin.co.uk)

#### Ash Sakula

Leather Lane Market, EC1

Wed, 11.00am – 2.00pm and 6.00pm onwards; Thurs, 11.00am – 2.00pm and 6.00pm onwards

'Leather Lane Stars' is a project to promote, publicise and reinvigorate the historic market of Leather Lane, EC1. As part of this campaign, architects Ash Sakula will be co-hosting stalls in the empty patches of Leather Lane from 11.00am – 2.00pm on Wednesday and Thursday – bring your ideas for London street markets. Leather Lane Lates will feature 'Market Corner Drinks' at the Craft Beer Co. public house, and then 'Looking Back to Look Forwards': an evening of films and talks at Le Regal cafe, also on Leather Lane.

**Tube: Farringdon; Rail: Farringdon Bus: 55, 243, 63**  
[www.ashsak.com](http://www.ashsak.com)  
<http://leatherlanestars.wordpress.com>



#### Atelier Ten

19 Perseverance Works, 38 Kingsland Road E2 8DD

Wed, 6.00pm – 8.00pm. Max 35 people.

'Turning a glass house into a green house': a presentation given by Meredith Davey, followed by a Q&A session, on the development of Gardens by the Bay in Singapore. Three distinctive waterfront gardens in the heart of Marina Bay will define Singapore as the world's premier tropical garden city. Whole office will be open to visitors. Access is via Hackney Road. Please note: no lift access to office.

**Tube: Liverpool Street, Old Street; Rail: Liverpool Street, Shoreditch, Hoxton; Bus: 26, 48, 55, 149, 242**  
[www.atelierten.com](http://www.atelierten.com)

#### BDSP Partnership

The Battleship Building, Paddington Central, 179 Harrow Road W2 6NB

Tues, 11.00am – 1.00pm; Wed, 11.00am – 1.00pm; Thurs, 11.00am – 1.00pm. Max 50 at one time. P RT

Presentation on BDSP's sustainable design approach and solutions through some built exemplar projects such as the London 2012 Velodrome and National Assembly for Wales (Tues and Thurs), as well as through current projects in the UK, Europe, UAE and Africa (Wed). Please check BDSP's website for directions. There are 5 visitor parking spaces available.

**Tube: Paddington; Rail: Paddington; Bus: 7, 23, 27, 46, 159**  
[www.bdsp.com](http://www.bdsp.com)

#### Bennetts Associates Architects

1 Rawstone Place EC1V 7NL

Sat, 10.00am – 5.00pm. Regular tours.

Displays of current projects including the Royal Shakespeare Theatre, Stratford-upon-Avon and Mint hotels in Amsterdam and Tower of London. Last entry 4.30pm. Max 20 at one time. d T G A RIBA Award-winning architects' office combining a revitalised group of redundant industrial buildings and an 18C barn with new contemporary elements. Sustainable features include re-use of existing buildings and green roofs.

**Tube: Angel, Farringdon; Bus: 4, 19, 38**

#### Child Graddon Lewis studios

Studio 1, 155 Commercial Street E1 6BJ

Sat, 10.00am – 5.00pm/Sun, 12.00noon – 5.00pm. Last entry 4.30pm. Max 100 at one time. d RT G A

Old warehouse building opening onto a courtyard with a large green planted wall and art exhibition wall. Refurbished by Child Graddon Lewis Architects & Designers.

**Tube/Rail: Liverpool Street; Overground: Shoreditch High Street; Bus: 67, 149, 8, 48, 35**

#### David Morley Architects

The Lookout, Hyde Park W2 2UH

Thurs, 5.00pm – 7.00pm DT

'Five-by-five' means a signal that has excellent strength and perfect clarity – the most understandable signal possible. The second event in David Morley Architects' FIVEbys series, 'Natural Consequences', introduces the practice's environmental design approach.

**Tube: Marble Arch, Lancaster Gate, Hyde Park Corner; Rail: Paddington, Victoria**  
[www.davidmorleyarchitects.co.uk](http://www.davidmorleyarchitects.co.uk)

#### Duggan Morris Architects Ltd

Unit 1, Zeus House, 16–30 Provost Street N1 7NG

Wed, 4.00pm – 6.30pm. Max 60 at one time. D RT

'Reinventing the Ordinary': DMA will present, through a series of displays and exhibition pieces, projects both past and present and a slide presentation, showing their thoughts on how reinventing ordinary spaces in our communities can lead to new approaches and innovations towards 'green sky' thinking and design. There are two entrances: a side access via stairs to our basement location or via the main entrance into Zeus House which has a lift/ramp for disabled access. Please call ahead on 020 7549 1780 should you need to access the lift, so we can ensure easy entry. Note no parking available as double yellow lines.

**Tube: Old Street; Rail: Old Street; Bus: 43, 55, 271, 21, 214**  
[www.dugganmorrisarchitects.com](http://www.dugganmorrisarchitects.com)

#### Feilden Clegg Bradley Studios

Twenty, Tottenham Street W1T 4RF

Thurs, 6.30pm – 8.30pm. Max 70 people. D RT

'Urban sustainability: the issues 'beyond architecture': presentations and debate exploring the wider issues of sustainability in the urban context. Speakers include Carolyn Steel, architect and author of Hungry City; Sion Parkinson, artist from the Cape Farewell project; and Nick James, Sustainability Projects Manager for BioRegional Quintain, speaking on the Feilden Clegg Bradley Studios project One Brighton. Booking required. Contact holly.mansergh@fcbstudios.com to reserve your seat.

**Tube: Goodge Street; Rail: Euston; Bus: 10, 14, 24, 73, 29**  
[www.fcbstudios.com](http://www.fcbstudios.com)

#### Green Structures

Unit A, Swan Island, Strawberry Vale, Twickenham TW1 4RP

Tues, 10.00am – 3.00pm; Wed, 10.00am – 3.00pm; Thurs, 10.00am – 3.00pm. Max 8 in workshop at one time. RT

Green Structures will be demonstrating a range of built environment innovations including Passive Heat Recovery Ventilation (Ventive), Thermal Memory House Project, Retrofit for the Future innovations, Zero Carbon Heating designs and other innovative architectural solutions.

**Tube: Richmond, then bus R68; Rail: Strawberry Hill, Twickenham**  
[www.greenstructures.co.uk](http://www.greenstructures.co.uk)

## Gregory Cowan

Meet at 9 Caledonian Road N1 9DX  
Mon 19 Sept, 12.00pm – 3.00pm. Max 10 in the group.

'Occupying Streets at all Hours' workshop: a practical fieldwork street design appraisal exercise for any professional with an interest in urban public space/urban design and wishing to add this to their CPD. The exercise will assess walkability, liveability and urban sustainability through a variety of research methods. Please bring a short statement about your interest in the workshop as an introduction to other participants. Access arrangements will be made for anyone with special requirements.

## Hawkins Brown

60 Bastwick Street EC1V 3TN  
Wed, 6.00pm – 9.00pm D R T

Hawkins Brown hosts a panel debate of the current options, pressures and incentives for redevelopment versus refurbishment across key sectors, including its Clapham Estate Regeneration and Low Carbon Workplace projects. Ring the bell for entry.  
**Tube: Barbican, Old Street Rail: Old Street, Kings Cross; Bus: 4, 55, 243**  
[www.hawkinsbrown.co.uk](http://www.hawkinsbrown.co.uk)

## ISG plc

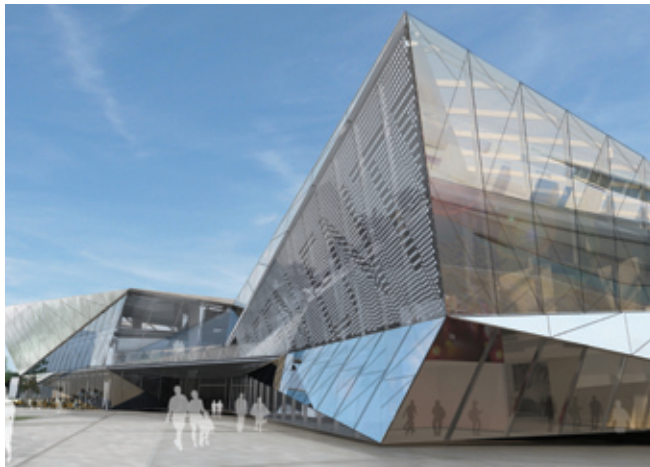
Siemens Urban Sustainability Centre  
Landmark Site, Tidal Basin Road, Royal Victoria Dock E16 1BW

Thurs, breakfast from 8.30am and talk on site 9.00am – 10.00am. Max 20 people RT

Site Breakfast at Siemens Urban Sustainability Centre: visit the site of the new Siemens Urban Sustainability Centre and learn about the construction of this world-leading example of sustainable building, which is also the first within London's new Green Enterprise District. Presentations by Siemens, ISG and Wilkinson Eyre. Breakfast included. Follow signs to project office. Please note no parking available on site and we recommend arriving by public transport. Limited availability and pre-booking advisable – email@isgplc.com

**DLR: Royal Victoria; Bus: 347, 147, 241, 300, 325, 474**

[www.isgplc.com](http://www.isgplc.com)



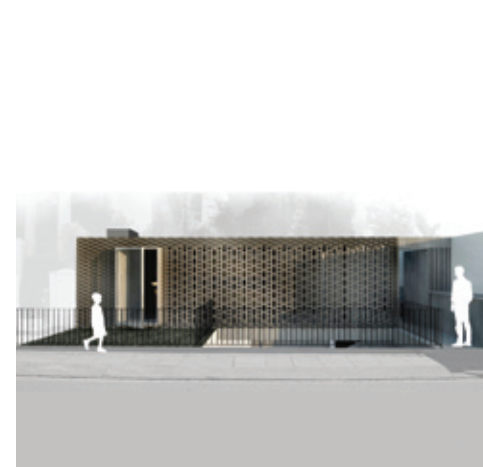
## Jerry Tate Architects

Hothouse, 274 Richmond Road E8 3QW  
Tues, 3.30pm – 6.00pm Last entry time 5.00pm D R T

Tea, treats and talking sustainability: 'Why aren't buildings more like trees? Why aren't cities more like forests?' An interactive exhibition and talk with tea and cakes. Office, meeting room and rooftop open to visitors – visitors will be met at reception and directed to event.  
**Tube: Bethnal Green; Rail: London Fields; Bus: 106, 254, 48**  
[www.jerrytatearchitects.com](http://www.jerrytatearchitects.com)

## John Thompson & Partners

23-25 Great Sutton Street EC1V 0DN  
Sat, 9.00am – 2.00pm. Regular architectural tours, first come basis. Architectural exhibition about building and other JTP projects. d T G A  
Refurbishment of a former 1920s warehouse into an architects' studio, fitted out with the latest green technology as a demonstration of sustainable office design.  
**Tube: Barbican; Tube/Rail: Farringdon, Old Street; Bus: 4, 55, 153, 243**



## Moixa Energy

Chalcot Square or 110 Gloucester Road, NW1 – please check [moixaenergy.com](http://moixaenergy.com) for confirmed details

**Wed, 1.00pm – 4.00pm D R**  
'Green DC Pie in the Sky' – take a stroll in the park and see our complete office in the sky, running on sunshine and a bit of magic from our box of tricks. As an exemplar of green sky thinking, Moixa will present a demonstration of a green office desk powered by renewable energy, and provide insights from award winning sustainable designers.  
**Tube: Chalk Farm, Camden Town; Rail: Kentish Town West; Bus: 27, 29, 134, 214, 88**  
[www.moixaenergy.com](http://www.moixaenergy.com)

## Nicholas Hare Architects: Sustainability in Practice – New Professionalism

3 Barnsbury Square, London N1 1JL  
Mon, 6.30pm – 8.00pm  
Part of the UK Green Building Council's World Green Building Week events programme – see [ukgbc.org](http://ukgbc.org)

## Nick Willson Architects

G2 Hoxton Works, 128 Hoxton Street N1 6SH  
Wed, 9.30am – 1.00pm. Max 10 at one time. Last entry at 12.30pm. D T  
'Retrofitting Made Simple': Nick Willson Architects invites the community and local business into its office to demonstrate and offer advice on how to improve and retrofit their existing properties to raise the sustainability credentials and performance of the fabric and space.  
**Tube: Old Street; Rail: Hoxton; Bus: 55, 149**  
[www.nickwillsonarchitects.com](http://www.nickwillsonarchitects.com)



## Penoyre & Prasad

28-42 Banner Street EC1Y 8QE  
Thurs, 6.00pm – 8.00pm. Max 50 people. D R T

'Retro-Fit for Purpose': The retrofit of non-domestic properties to meet the UK's carbon reduction commitment appears dauntingly complex with properties of different ages, size, construction, and with varied tenures demanding different solutions to almost identical properties. Penoyre & Prasad look at the imperative of efficiencies through repetition and scale, and at emerging patterns which may provide an effective blueprint, with reference to recent projects including Guy's Tower.  
**Tube: Old Street; Rail: Liverpool Street; Bus: 55, 76, 242, 243, 43**  
[www.penoyre-prasad.net](http://www.penoyre-prasad.net)

## PRP Architects

10 Lindsey Street, Smithfield EC1A 9HP  
Wed, 6.00pm – 8.30pm. Max 40 people. Last entry time 6.30pm. D R T  
'Delivering Zero Carbon Residential Developments': in a lively open panel discussion with industry professionals and the audience we will be examining what it takes to deliver zero carbon residential developments in an inner city context. Please contact Tracy Galvin at [tracy.galvin@prparchitects.co.uk](mailto:tracy.galvin@prparchitects.co.uk) or 020 7653 3510 to register your interest in attending.  
**Tube: Barbican, Farringdon; Rail: Barbican, Farringdon; Bus: 4, 56, 76, 153**  
[www.prparchitects.co.uk](http://www.prparchitects.co.uk)

## Studio Egret West

No.1 Compton Courtyard, 40 Compton Street  
Wed, 6.00pm – 8.00pm Max 50 people. D d R T

'From Pea Soup to Onion Rings': presentation and debate on how to best to consolidate the future growth of London. Please buzz "1" from Compton Street to access office. Parking available in car park just off Goswell Road.  
**Tube: Farringdon, Barbican; Rail: Farringdon, Old Street; Bus: 4, 54**  
[www.egretwest.com](http://www.egretwest.com)

## Wilkinson Eyre Architects

Siemens Urban Sustainability Centre  
Landmark Site, Tidal Basin Road, Royal Victoria Dock E16 1BW  
Thurs, breakfast from 8.30am and talk on site 9.00am – 10.00am RT  
Site Breakfast at Siemens Urban Sustainability Centre: visit the site of the new Siemens Urban Sustainability Centre and learn about the construction of this world-leading example of sustainable building, which is also the first within London's new Green Enterprise District. Presentations by Siemens, ISG and Wilkinson Eyre. Breakfast included. Follow signs to project office. Please note no parking available on site and we recommend arriving by public transport. Limited availability and pre-booking advisable – email@isgplc.com  
**DLR: Royal Victoria; Bus: 347, 147, 241, 300, 325, 474**  
[www.wilkinsoneyre.com](http://www.wilkinsoneyre.com)

## 'Getting Ready to Retrofit' – hear direct from leading UK retrofit experts

As a sponsor of the Green Sky Thinking Open Practice strand, the Institute for Sustainability, through its free FLASH programme\*, has brought together some of the UK's leading retrofit experts to demonstrate how industry professionals and trades can understand and seize the business opportunities emerging in the fast-expanding area of low carbon building and retrofit.

### The free "Getting Ready to Retrofit" seminar series runs over 20-22 September.

The seminars will also preview some of the Institute's Retrofit Guides, which cover the complete low carbon domestic retrofit process and have been written by many of the expert speakers.

Topics include retrofit planning and resource efficiency as well as the key Government incentive schemes including Green Deal, Feed in Tariffs and the Renewable Heat Incentive.

Complementary presentations are also featured on the outcomes and lessons learned from a range of practical demonstrator retrofit housing projects (Retrofit for the Future), funded by the Technology Strategy Board, a strategic partner in the FLASH programme.

Advance booking is essential. TO BOOK A PLACE for these seminars email [syates@open-city.org.uk](mailto:syates@open-city.org.uk) at Open-City or call 020 7380 0412

All requests for bookings for the Retrofit Seminars should state name, company, daytime contact number, and email address. Places are strictly limited and offered on a first come, first served basis to small and medium-sized enterprises (SMEs), who are registered FLASH members or who would be interested in joining the FLASH programme.

If you are interested in booking more than one seminar, please indicate your choices in order of preference.

If your company is not registered on FLASH but is interested in joining, please see <http://www.instituteforsustainability.org.uk/flash.html> for more details.

\* FLASH is part funded by the European Regional Development Fund.

Tues, 9.00am – 1.00pm

### Engaging People in the Retrofit process

Venue: Energy Saving Trust, 21 Dartmouth Street, London SW1H 9BP

**Energy Saving Trust overview:** Andy Deacon, Energy Saving Trust

**Introduction to Retrofit Guides:** Peter Rickaby, RickabyThompson Associates

**Retrofit for the Future case studies:** Fran Bradshaw, Anne Thorne Architects / Matt Bush, Metropolitan Housing Partnership

**Living in a Low Carbon Home:** Linn Rafferty, JTec, and Seb Junemann, Peabody Trust

**User/occupier motivations; communicating the "green" message:** Liz Warren, SE2 / Energy Saving Trust

**Examples of engaging with residents and communities:** Matt Bush, Metropolitan Housing Partnership

Hosted by the Energy Saving Trust

Tues, 6.00pm – 9.00pm

### Preparing for the Retrofit challenge; Gearing up to exploit the opportunities

Venue: Royal Institute of British Architects, 66 Portland Place, London W1B 1AD

**Introduction to Retrofit Guides:** Peter Rickaby, RickabyThompson Associates

**Creating a Low Carbon Retrofit Plan:** Andrew Mellor, PRP Architects

**Finance and Procurement approaches to Low Carbon Retrofit:** Luke Smith, Fusion 21

**Peabody PV programme and Green Deal – kickstarting the process towards large scale retrofit:** Tessa Barraclough, Peabody Trust

Hosted by the Royal Institute of British Architects

Wed, 9.00am – 1.00pm

### Sustainable retrofit in commercial buildings: Drivers and developments - developed with the Better Buildings Partnership

Venue: Royal Institution of Chartered Surveyors, 12 Great George Street, London SW1P 3AD

**Introduction to Retrofit Guides:** Andrew Mellor, PRP Architects

**Sustainable retrofit in commercial property - experience from the BBP and British Land :** Justin Snoxall, British Land

**1 Canada Square Retrofit:** David Hodge, Canary Wharf Group

**Using Local SMEs/supply chains for retrofit contracts:** Gay Harrington, East London Business Place

**RE:FIT: Retrofitting at scale through energy performance calculating - a TfL case study:** Andy Stanton, Transport for London

Hosted by the Royal Institution of Chartered Surveyors

Wed, 2.00pm – 5.00pm

### Improving the Fabric and Services – a whole house approach

Venue: National Federation of Roofing Contractors, Roofing House, 31 Worship Street, London EC2A 2DY

**Introduction to Retrofit Guides:** Andrew Mellor, PRP Architects

**Improving the Fabric – Fabric first/ whole house approach:** Mark Elton, ECD Architects

**Improving the Building Services:** John Willoughby

**Green Retrofit Process:** Nigel Griffiths, AEA

**The EST/EWI project and emerging planning issues:** Mark Elton, ECD Architects / James Russill, Energy Saving Trust

Hosted by the National Federation of Roofing Contractors

Wed, 6.00pm – 9.00pm

### Small Builder – Planning for the Low Carbon Retrofit challenge and opportunity

Venue: Federation of Master Builders, Gordon Fisher House, 14-15 Great James Street, London WC1N 3DP

**Introduction to Retrofit Guides:** John Duggart, Sustainable Energy Academy

**Managing medium/small scale retrofit projects: Robert Prewett, Prewett Bizley Marketing and Promoting your Low carbon services:** Stephanie Moore, Redearth PR

**Skills & Accreditation:** Liz Warren, SE2

**Customer/home owner examples – Retrofit case studies:** John Duggart, Sustainable Energy Academy

Hosted by the Federation of Master Builders

Thurs, 9.00am – 1.00pm

### Retrofit: – the next steps – Retrofit at scale

Venue: Mayville Community Centre, Woodville Road, London N16 8NA

**Introduction to Retrofit Guides:** Paul Ruysssevelt, Technology Strategy Board

**Passivhaus approach to "Retrofit for the Future":** Justin Bere, Bere Architects

**German Passivhaus examples and scaling up:** speakers tbc

**Scaling up – next steps:** Keith Howard, Southern Housing Group

**Scaling up – Birmingham Energy Savers:** Steve Owen, Ursus Consulting

**Open debate/ question time – Retrofit at Scale**

Hosted by Southern Housing and the Mayville Community Centre

Thurs, 2.00pm – 5.00pm

### Learning from practical experience; translating into future retrofit action

Venue: Camden Council Chambers, Judd Street, London WC1H 9JE

**Camden Council retrofit planning – beyond Retrofit for the Future:** Councillor Sean Birch

**Introduction to Retrofit Guides:** John Duggart, Sustainable Energy Academy

**Retrofit for the Future case study:** John Duggart, Sustainable Energy Academy; Richard Hurford, United House; Daniel White, Camden Housing

**Home assessment/survey for Low Carbon Retrofit:** Russell Smith, Parity Projects

Hosted by Camden Council

Thurs, 6.00pm – 9.00pm

### Skills, Training and Accreditation for Low Carbon Retrofit

Venue: 1 Victoria Street, London SW1H 0ET

**Energy Efficiency Partnership for Homes (EEPH) Overview of Skills:** David Strong, Chairman EEPH

**Introduction to Retrofit Guides:** Paul Ruysssevelt, Technology Strategy Board  
**Skills, Training and qualifications in the UK – an overview:** Sara Pearce, Construction Skills

**Training and accreditation for low carbon assessors and advisors:** Richard Foxwell, Asset

**Skills, Training and accreditation for low carbon installers:** Linn Rafferty, Jtec Energy  
Hosted by the Energy Efficiency Partnership for Homes and the Technology Strategy Board



Institute for Sustainability

European Union



European Regional Development Fund  
Investing in your future

## What makes a sustainable building? Success stories from the commercial and development sector

### 10 Triton Street & Regent's Place Estate

10 Triton Street NW1 3BF  
Sat/Sun 10.00am-5.00pm. Tours 10.00am, 12.00noon, 2.00pm, 4.00pm, first come basis. Max 10 per tour. DTG 117,000 sq ft grade 'A' new development with a steel-framed structure; stability is provided by concrete cores. The facade cladding is a curtain walling system and the building has achieved BREEAM rating of excellent. Entry: main building areas.  
*Tube: Great Portland Street; Tube/Rail: Euston, Marylebone; Bus: C2, 10, 18, 24, 27, 29, 30, 73, 88, 134*

### Angel Building

407 St. John Street EC1V 4AB  
Sat 10.00am-5.00pm/Sun 1.00pm-5.00pm. Regular architect-led tours, first come basis, queuing outside if necessary. Last entry 4.15pm. Max 75 at one time. DTGA  
Re-invention of an early 1980's office block by Allford Hall Monaghan Morris. With elegant and robust modern detailing, the existing concrete frame has been re-used and re-wrapped with a highly energy-efficient glazed skin. Striking Ian McChesney art piece in foyer and stunning London-wide views from terrace. RIBA and BCO Award Winner 2011. Entry: atrium, top floor terrace.  
*Tube: Angel; Bus: 19, 38, 341, 73, 214, 30, 205*  
[www.derwentlondon.com](http://www.derwentlondon.com)  
Please note an additional event with Allford Hall Monaghan Morris and developer Derwent London at the Angel Building will be held on Tues 20 Sept. Check [greenskythinking.org.uk](http://greenskythinking.org.uk) for full details.

### Being prepared for the inevitable – moving towards a low-carbon built environment

2 Throgmorton Avenue, London EC2N 2DG  
Thurs, 4.00pm – 6.00pm  
Part of the UK Green Building Council's World Green Building Week events programme – see [ukgbc.org](http://ukgbc.org)

### Investment Property Forum & Better Buildings Partnership Green Lease Update

6 Mitre Passage, London SE10 0ER  
Tues, 12.00pm – 2.30pm  
Part of the UK Green Building Council's World Green Building Week events programme – see [ukgbc.org](http://ukgbc.org)

### Nexus Place, 25 Farringdon Street, London – Tishman Speyer Properties

Mon, 12.30pm – 1.30pm, Wed, 12.30pm – 1.30pm  
Part of the UK Green Building Council's World Green Building Week events programme – see [ukgbc.org](http://ukgbc.org)

### Retrofitted Sustainability in Modern Office Buildings

SJ Berwin LLP, 10 Queen Street Place EC1R 4BE  
Tues, 8.15am for 8.30am – 10.00am. Max 60 people. DRT  
An informal series of short breakfast talks in the rooftop 'Winter Garden' outlining how SJ Berwin LLP has reduced energy consumption significantly since the company moved in to 10 Queen Street Place, and exploring the wider issues in making office buildings sustainable. Speakers providing the professional and client perspectives will include senior representatives from SJ Berwin LLP, Drivers Jonas Deloitte, Lend Lease and HOK. Advance booking is ESSENTIAL by emailing [green@open-city.org.uk](mailto:green@open-city.org.uk).  
*Rail: Blackfriars; Tube/Rail: London Bridge, Liverpool Street; Tube/DLR: Bank; Bus: 344, 15, 17, 11, 23*  
[www.sjberwin.com](http://www.sjberwin.com)

### One Bishops Square

One Bishops Square E1 6AD  
Sun, 10.00am-5.00pm. Last entry 4.30pm. Max 150 at one time. DRT G  
An efficient, flexible, user-friendly and supportive working environment by Foster and Partners. 'Intelligent' building with many sustainable features including London's largest office-based solar installation and inbuilt computer system aimed at efficiency and energy conservation. Entry: 6th floor coffee bar, office area, terrace, lobby.  
*Tube/Rail: Liverpool Street; Bus: 8, 11, 26, 35, 42*

### Refurbishment of 199 Bishopsgate

Meet on site at 199 Bishopsgate, EC2  
Mon, 4.00pm – 5.30pm. Max 30 people  
Sarah Cary, Sustainable Development Executive at British Land, will give a talk on site on the refurbishment of British Land's 199 Bishopsgate office development at Broadgate. Due for completion in late 2012, the refurbishment will substantially increase the operational lifespan and sustainability of the building and is targeted to achieve a BREEAM 'Excellent' rating. Limited availability and advance booking is essential by emailing [green@open-city.org.uk](mailto:green@open-city.org.uk). Full joining instructions will be provided.  
[www.britishland.com](http://www.britishland.com)

### Site Breakfast at Siemens Urban Sustainability Centre

Landmark Site, Tidal Basin Road, Royal Victoria Dock E16 1BW  
Thurs, breakfast from 8.30am and talk on site 9.00am – 10.00am. Max 20 people RT  
Visit the site of the new Siemens Urban Sustainability Centre and learn about the construction of this world-leading example of sustainable building, which is also the first within London's new Green Enterprise District. Presentations by Siemens, ISG and Wilkinson Eyre. Breakfast included. Follow signs to project office. Please note no parking available on site and we recommend arriving by public transport. Limited availability and pre-booking advisable – email [isgplc.com](mailto:isgplc.com)  
*DLR: Royal Victoria; Bus: 347, 147, 241, 300, 325, 474*  
[www.isgplc.com](http://www.isgplc.com)  
[www.wilkinsoneyre.com](http://www.wilkinsoneyre.com)

### Sustainable Communities at Regent's Place

Meet at the Regent's Place Marketing Suite, to the rear of 338 Euston Road NW1 3BG  
Wed, 9.30am – 11.00am. Max 30 people  
Anna Devlet, Communities Executive at British Land, will give a talk about the community engagement that has taken, and continues to take place, at Regent's Place. The talk will provide an overview of the estate, followed by a tour around various features including the new theatre, ending up at the viewing platform at the NEQ development. Limited availability (max 30 places) and advance booking is essential by emailing [green@open-city.org.uk](mailto:green@open-city.org.uk).  
[www.britishland.com](http://www.britishland.com)

### Sustainable Office Exemplar at 60 Threadneedle Street

Wed, 9.00am – 10.00am, 10.15am – 11.15am. Max 20 people per visit  
An informal introduction to 60 Threadneedle Street, a Hammerson development completed in 2009 and rated BREEAM 'Excellent'. Paul Edwards, Head of Sustainability, Hammerson, and Tim Jonck, General Manager, will highlight factors for success in creating and greening commercial buildings. Limited availability and advance booking is essential by emailing [green@open-city.org.uk](mailto:green@open-city.org.uk). Full joining instructions will be provided.  
[www.hammerson.com](http://www.hammerson.com)

### What makes a sustainable neighbourhood?

#### 'Leather Lane Stars'

Leather Lane EC1  
Wed, 11.00am – 2.00pm and 6.00pm onwards; Thurs, 11.00am – 2.00pm and 6.00pm onwards  
'Leather Lane Stars' is a project to promote, publicise and reinvigorate the historic market of Leather Lane, EC1. As part of this campaign, architects Ash Sakula will be co-hosting stalls in the empty patches of Leather Lane from 11.00am – 2.00pm on Wednesday and Thursday – bring your ideas for London street markets. Leather Lane Lates will feature 'Market Corner Drinks' at the Craft Beer Co. public house, and then 'Looking Back to Look Forwards', an evening of films and talks at Le Regal cafe, also on Leather Lane.  
*Tube: Farringdon; Rail: Farringdon Bus: 55, 243, 63*  
[www.ashsak.com](http://www.ashsak.com)  
<http://leatherlanestars.wordpress.com>

#### 'Occupying Streets at all Hours'

Meet at 9 Caledonian Road N1 9DX  
Mon, 12.00pm – 3.00pm. Max 10 in the group  
A practical fieldwork street design appraisal exercise, led by Gregory Cowan, University of Westminster, for any professional with an interest in urban public space/urban design and wishing to add this to their CPD. The exercise will assess walkability, liveability and urban sustainability through a variety of research methods. Please bring a short statement about your interest in the workshop as an introduction to other participants. Access arrangements will be made for anyone with special requirements.

### Olympic Fringe – Fish Island Walking Tour: for London Borough councillors

Wed, 9.15am for 9.30am – 10.45am. Max 30 people  
With a unique blend of heritage, employment and environmental challenges, Fish Island lies immediately to the west of the Olympic Stadium, across the River Lea. As former heavy industries are replaced by creative industries we explore the Olympic Fringe on the ground with some of the team charged with planning for the area's future as a vibrant and sustainable urban neighbourhood. Priority entry is given to London borough councillors and prebooking is essential: email [advocacy@open-city.org.uk](mailto:advocacy@open-city.org.uk)

### Olympic Park (ODA Bus Tour): for London Borough councillors

Wed, 11.00am – 1.00pm. Max 30 people  
A fabulous opportunity to see the greenest ever Olympic Park firsthand on a guided bus tour taking in the main venues for the 2012 games, including the Olympic Stadium, Aquatics Centre, Velodrome, Athletes Village, Handball Arena and the temporary Basketball Arena. Guided by a member of the ODA Planning team. Priority entry is given to London borough councillors and prebooking is essential: email [advocacy@open-city.org.uk](mailto:advocacy@open-city.org.uk)

### Queens Park Low Carbon Zone

Meet: Queens Park underground station NW6 6NL  
Sat 10.00am-5.00pm. Sat tours at 10.00am, 12.00noon, 2.00pm, 4.00pm, pre-book ONLY by email to [gogreen@westminster.gov.uk](mailto:gogreen@westminster.gov.uk). Max 6 per tour. TG A  
A tour through the Queens Park Low Carbon Zone to see how WCC plans to reduce emissions in the area by more than 20% and visiting several different properties including a Victorian cottage in a conservation area refurbished to reduce carbon emissions by 60-80% and Code for Sustainable Homes Level 4+ properties under construction. Sustainable features include solid wall insulation, cavity wall insulation, MVHR, community heating PV etc. Special demonstration to show how to draught proof a Victorian cottage.  
*Tube/Rail/Overground: Queens Park; Bus: 18, 28, 36, 187, 316*

### Sponge Trail of Eco-Buildings

Sat 10.00am-5.00pm. Starting point: Peckham Space, 89 Peckham High Street SE15 5RS. For days and times and full details see [spongenet.org/openhouselondon.org.uk](http://spongenet.org/openhouselondon.org.uk)  
G  
Sponge, the network of young professionals with an interest in sustainability and the built environment have organised this self-guided trail covering 12.5 miles and 14 eco-buildings. The route from Camberwell to Dalston via Southwark and the City covers almost every conceivable eco-angle and some impressive architecture. Look out for those that are pre-book only.  
*Tube: New Cross; Rail: Queens Road, Peckham; Bus: 436, 171, 12, 63*

### 'Up on the Roof'

Meet at Roots and Shoots, Walnut Tree Walk, North Lambeth SE11 6DN  
Mon, 2.00pm – 5.00pm. Max 20 in the group. Tour starts 2.00pm  
A living roof tour of North Lambeth led by Ann Bodkin, including roofs for bees, DIY community-built garage rooftops, artist's ecostructure, edible bike shed and the UK's largest green roof renewal housing project. Rooftop access involves climbing steps. Limited spaces – book to reserve place at [green@open-city.org.uk](mailto:green@open-city.org.uk)  
*Tube: Lambeth North, Waterloo; Bus: 59, 159, 3, 360, 507*  
[www.annbodkin.co.uk](http://www.annbodkin.co.uk)

### Urban Sustainability: the issues 'beyond architecture'

Twenty, Tottenham Street W1T 4RF  
Thurs, 6.30pm – 8.30pm. Max 70 people. DRT  
Presentations and debate at Feilden Clegg Bradley Studios exploring the wider issues of sustainability in the urban context. Speakers include Carolyn Steel, architect and author of *Hungry City*; Sion Parkinson, artist from the Cape Farewell project; and Nick James, Sustainability Projects Manager for BioRegional Quintain, speaking on the Feilden Clegg Bradley Studios project One Brighton. Booking required. Contact [holly.mansergh@fcbstudios.com](mailto:holly.mansergh@fcbstudios.com) to reserve your seat. Access to ground floor only.  
*Tube: Goodge Street; Rail: Euston; Bus: 10, 14, 24, 73, 29*  
[www.fcbstudios.com](http://www.fcbstudios.com)



### Retrofit Exemplars

London's buildings account for nearly 80% of carbon emissions – retrofitting to make them energy efficient presents not merely a challenge but actually one of the biggest economic opportunities in terms of investment in green skills and jobs. Green Sky Thinking offers a unique chance to hear directly from retrofit experts in the 'Getting Ready to Retrofit' seminars – see pages 10–11. It also features opportunities to see retrofit solutions at first hand, get hands-on advice and hear more about how retrofit might develop in the future – for commercial and public as well as domestic buildings.

#### 100 Princesdale Road

100 Princesdale Road W11 4NP  
Sun 10.00am–5.00pm. Regular architect led tours, pre-book ONLY through Open House London at [www.openhouselondon.org.uk](http://www.openhouselondon.org.uk) Max 6 per tour. G A  
The UK's first certified PassivHaus refurbishment, by Octavia Housing, of Victorian social home as part of Retrofit for the Future programme. Innovative ideas alongside tried and tested principles, achieve an 80% CO<sub>2</sub> reduction and 94% less energy use. Paul Davis + Partners 2010.  
*Tube: Holland Park; Tube/Rail: Shepherds Bush; Bus: 228, 31, 148*

#### 2 Amyand Cottages

2 Amyand Cottages, Amyand Park Road, Twickenham TW1 3JA  
Sun 10am–3pm. Hourly owner-led tours, pre-book ONLY through Open House at [www.openhouselondon.org.uk](http://www.openhouselondon.org.uk), please click on link below. Last tour 2pm. Max 5 per tour. d G  
Small Victorian mid-terrace cottage with extensive retrofitting of energy saving measures and microgeneration with detailed information on energy performance. 1880s. Entry: house, garden.  
*Tube/Rail: Richmond; Rail: St Margarets; H37,33,R68,R70*

#### 3 Acorns Retro Eco-house

2 Coleman Road, Camberwell SE5 7TG  
Sat/Sun 10.00am–5.00pm. Last entry 4.30pm. Max 20 at one time. P Q G  
Victorian terrace two-bedroomed house, converted into London's first retro carbon-negative home. It sells more green electricity to national grid than it imports fossil fuels. Sustainable features include solar electric and hot water panels, wind-turbine (useless!), wood-burner, rain-harvester, triple-glazing, solid wall and under-floor insulation, range LED bulbs. Display on green-lifestyle. Owner is eco-author and business eco-auditor. 1844. Entry: ground floor, garden.  
*Tube: Elephant & Castle; Tube/Rail: London Bridge then 343; Rail: Rye Lane; Bus: 36, 12, 171*

#### 39 Parkholme Road

39 Parkholme Road E8 3AG  
Sat 10.00am–5.00pm. Architect-led hourly tours, pre-book ONLY through Open House London at [www.openhouselondon.org.uk](http://www.openhouselondon.org.uk). Architect and builder on site. Slide projection of build running. Last tour 4pm. Max 18 per tour. T G A  
Minimal and green remodelling of a Victorian terraced family house, incorporating exceptional thermal efficiency, solar heating and water recycling throughout the original structure and a new copper and glass box extension. Macdonald Wright Architects 2010. Entry: most areas of house and garden.  
*Overground: Dalston Junction, London Fields; Bus: 38, 277, 30, 56, 242*

#### 49 Camberwell Grove

49 Camberwell Grove SE5 8JA  
Sat 10.00am–1.00pm/Sun 10.00am–5.00pm. First come basis, queuing outside if necessary. Max 20 at one time. DT G  
This tiny terraced house with unusual garden has been remodelled to provide a light, flexible interior, full disabled access, with rainwater harvesting, air-source heat pump and PV panels. Eger Architects (refurb) 2009. Entry: house and garden.  
*Tube: Oval; Tube/Rail: Elephant & Castle; Rail: Denmark Hill; Bus: 12, 35, 36, 40, 45*

#### 74 Amhurst Road

74 Amhurst Road E8 1JH  
Sat 11.00am–6.00pm. Hourly tours, except for 1pm, first come basis, queuing outside if necessary. Last tour 5pm. Max 15 per tour. G  
Full eco-renovation of large mid-Victorian semi; interior and exterior solid wall insulation, sash double glazing, secondary glazing, solar PV, novel loft insulation/storage solution and wind-powered ventilation system. 1870. Entry: all areas.  
*Rail: Hackney Downs; Overground: Hackney Central; Bus: 30, 38, 48, 55, 56*

#### CityWest Homes Retrofit for the Future Home

88 Lothrop Street W10 4JD  
Sat 10.00am–5.00pm. Regular tours, pre-book ONLY on [teydmannpeel@cw.hackney.gov.uk](mailto:teydmannpeel@cw.hackney.gov.uk). RT G  
This house features many carbon emission-reducing measures, thanks to £150,000 award from the Technology Strategy Board, including learning heating controller, innovative insulation schemes, LED lighting and a boiler that generates electricity.  
*Tube/Overground: Queens Park; Bus: 52*

#### EcoConsulting Offices

28 Marshalsea Road SE1 1HF  
Sat 3pm–7pm/Sun 1pm–5pm. Regular tours, including a slideshow of work. Max 20 at one time. T G E  
Beautiful converted warehouse, recently refurbished to showcase two major sustainability initiatives – natural insulation and clay plaster of solid walls and installation of biomass wood pellet stove/boiler. Home to EcoConsulting, a sustainability consultancy with a focus on reworking the relationship between household, industries, businesses and the environment through greater energy-efficiency and better resource use. 1880s.  
*Tube: Borough; Tube/Rail: London Bridge, Elephant & Castle; 344, 133, C10, 35, 343, 40*

#### John Thompson & Partners

23–25 Great Sutton Street EC1V 0DN  
Sat, 9.00am–2.00pm. Regular architect-led tours, first come basis. Architectural exhibition about building and other JTP projects. Max 20 at one time. d T G A  
Refurbishment of a former 1920s warehouse into an architects' studio, fitted out with the latest green technology as a demonstration of sustainable office design. John Thompson & Partners 1920s/2008. Entry: reception, studios, courtyard, an annex.  
*Tube: Barbican; Tube/Rail: Farringdon, Old Street; Bus: 4, 55, 153, 243*

#### Mayville Community Centre

Woodville Road N16 8NA  
Sat/Sun 10.00am–5.00pm. First come basis, queuing outside if necessary. First tour 11.00am, last tour 3.00pm. Last entry 4.00pm. Max 15 per tour. C D N T G A  
One of the first Passivhaus retro-fit projects in the UK and the first non-domestic to be fully certified. A revitalised and super-energy-efficient building which provides a much-improved hub for the community in which it sits. Building has achieved a 94% energy saving. Bere Architects 1890/2010. Entry: all areas including roof gardens.  
*Tube/Rail: Highbury & Islington; Overground: Canonbury, Dalston Kingsland; Bus: 236, 341, 73, 476, 21*

#### Queens Park Low Carbon Zone

Meet: Queens Park underground station NW6 6NL  
Sat 10.00am–5.00pm. Sat tours at 10.00am, 12.00noon, 2.00pm, 4.00pm, pre-book ONLY by email to [gogreen@westminster.gov.uk](mailto:gogreen@westminster.gov.uk). Max 6 per tour. T G A  
A tour through the Queens Park Low Carbon Zone to see how WCC plans to reduce emissions in the area by more than 20% and visiting several different properties including a Victorian cottage in a conservation area refurbished to reduce carbon emissions by 60–80% and Code for Sustainable Homes Level 4+ properties under construction. Sustainable features include solid wall insulation, cavity wall insulation, MVHR, community heating PV etc. Special demonstration to show how to draught proof a Victorian cottage.  
*Tube/Rail/Overground: Queens Park; Bus: 18, 28, 36, 187, 316*

#### 'Retrofitting Made Simple'

G2 Hoxton Works, 128 Hoxton Street N1 6SH  
Wed, 9.30am–1.00pm Last entry at 12.30pm. Max 10 at one time DT  
Nick Willson Architects invites the community and local business into its office to demonstrate and offer advice on how to improve and retrofit their existing properties to raise the sustainability credentials and performance of the fabric and space.  
*Tube: Old Street; Rail: Hoxton; Bus: 55, 149*  
[www.nickwillsonarchitects.com](http://www.nickwillsonarchitects.com)

#### 'Retro-Fit for Purpose':

28–42 Banner Street EC1Y 8QE  
Thurs, 6.00pm–8.00pm. Max 50 people DRT  
The retrofit of non-domestic properties to meet the UK's carbon reduction commitment appears dauntingly complex with properties of different ages, size, construction, and with varied tenures demanding different solutions to almost identical properties. Penoyre & Prasad look at the imperative of efficiencies through repetition and scale, and at emerging patterns which may provide an effective blueprint, with reference to recent projects including Guy's Tower. Main office reception area open to visitors.  
*Tube: Old Street; Rail: Liverpool Street; Bus: 55, 76, 242, 243, 43*  
[www.penoyre-prasad.net](http://www.penoyre-prasad.net)

#### The Coach House

2a Belsize Park Gardens NW3 4LA  
Sat/Sun 10.00am–5.00pm. Tours Sat/Sun 10.00am, 11.00am, 12.00noon, 2.00pm, 3.00pm, 4.00pm, pre-book ONLY through Open House London at [www.openhouselondon.org.uk](http://www.openhouselondon.org.uk) Max 10 per tour. NB. Children over 12 only. T G  
Victorian house retrofitted to save 70% carbon, features internal and external insulation, high performance double glazing, integral draught stripping and LED low energy lights. 1860.  
*Tube: Belsize Park, Swiss Cottage, Finchley Road; 168, 268, 13, 46, 113*

#### Zero Carbon Loft

38a Cumberland Road, Hanwell W7 2EB  
Sat 10.00am–5.00pm/Sun 10.00am–1.00pm. Regular architect-led tours. Pre-book ONLY by email to [karina@greenstructures.co.uk](mailto:karina@greenstructures.co.uk). Max 15 per tour. PT G A  
'An eco-refurbishment project which crammed in just about every energy- and water-saving device known to man whilst highlighting the importance of retrofitting existing buildings.' Alistair McGowan. Green Structures 2010.  
*Tube: Boston Manor, Northfields; Rail: Hanwell; 195, E8, 83, 207*

## Sustainable Exemplars

As part of the weekend strand of Green Sky Thinking, you can also explore how the following exemplar buildings are contributing to London's sustainable development. See [openhouselondon.org.uk](http://openhouselondon.org.uk) for full details of times and access.

## Contemporary Sustainable Homes and Housing

4 Carmarthen Place  
15 and a half Consort Road  
199 Southwark Bridge Road  
Armour Close  
Claredale Street  
Ed's Shed/Sunken House  
The Hanging Bathroom of Balham  
International House  
Mulberry Crescent  
Tree House  
Walter Segal self-build house with eco-refurbishment

## Sustainable Schools, Education and Community Buildings

Berger Primary School  
Bygrove Primary School  
Chandos East Community Centre  
City of London Academy Islington  
City of Westminster College  
Grassroots  
Growing Communities' Eco Classroom  
Holy Trinity CE Primary School  
Hylands Primary School  
Kilburn Grange Park Adventure Playground  
Lee Valley Athletics Centre  
Linear House  
Little Venice Sports Centre  
Lowther Children's Centre  
LSBU K2 Building  
Mayville Community Centre  
Northbury Junior School Extension  
Ravensbourne  
St Ann's School  
Self-built Straw Bale Building, Hackney  
City Farm  
Stratford Circus  
Teddington School  
Thames Chase Forest Centre  
The Circle Library  
The Elmgreen School  
The Gower School  
The Hub – Regent's Park Sports Pavilion  
The Richard Cloudesley School  
The Sutton Life Centre  
Vittoria Primary School

## Other events

### If the future is already built, how can we make it carbon neutral?

The Building Centre, London WC1E 7BT  
Tues, 2.00pm – 4.00pm  
Part of the UK Green Building Council's World Green Building Week events programme – see [ukgbc.org](http://ukgbc.org)

### City-Scale Retrofit Roundtable

City Hall SE1  
Tues, 6.00pm – 9.00pm  
Please note this event is for invited guests only.  
Part of the UK Green Building Council's World Green Building Week events programme – see [ukgbc.org](http://ukgbc.org)

### Concrete Elegance – New Education Buildings in London

The Building Centre, London WC1E 7BT  
Wed, 6.30pm – 8.00pm  
Part of the UK Green Building Council's World Green Building Week events programme – see [ukgbc.org](http://ukgbc.org)

### Domestic Embodied and Operational Carbon & Life Cycle Costing Decision Tool

90 Fenchurch Street, London EC3M 4ST  
Wed, 8.30am – 10.00am  
Part of the UK Green Building Council's World Green Building Week events programme – see [ukgbc.org](http://ukgbc.org)

### Reducing energy use in schools: In the new green economy, who is best placed to deliver low carbon schools?

Central London  
Thurs, 5.30pm – 8.30pm  
Part of the UK Green Building Council's World Green Building Week events programme – see [ukgbc.org](http://ukgbc.org)

### Ska Retail – An update on the RICS environmental fit-out assessment

Wahaca, 80 Wardour Street, London  
Thurs, 4.00pm – 7.00pm  
Part of the UK Green Building Council's World Green Building Week events programme – see [ukgbc.org](http://ukgbc.org)

### The Environment and You

99 Bishopsgate  
Wed, 9.00am – 5.00pm; Thurs, 9.00am – 5.00pm  
Part of the UK Green Building Council's World Green Building Week events programme – see [ukgbc.org](http://ukgbc.org)

### Picture credits

Page 3: top: Atelier Ten, bottom: BDS Partnership; page 4: top: 74 Amhurst Road, bottom: British Land; page 5: Angel Building (Allford Hall Monaghan Morris/Derwent London); page 6: AECOM; page 7: Feilden Clegg Bradley Studios; page 8: top: Wilkinson Eyre, bottom: Jerry Tate Architects; page 9: left: Nick Willson Architects, right: PRP Architects; page 14: Penoyre & Prasad

# Diary

Please note prebooking is required for some Saturday and Sunday events – please see page number for full details.

## Saturday

### John Thompson & Partners

9am – 2pm

### The Hub – Regent's Park Sports Pavilion

9am – 5pm

### Hylands Primary School

10am – 12noon

### 49 Camberwell Grove

10am – 1pm

### Berger Primary School

10am – 1pm

### Holy Trinity CE Primary School

10am – 1pm

### Lowther Children's Centre

10am – 1pm

### Stratford Circus

10am – 1pm

### Grassroots

10am – 2pm

### City of London Academy Islington

10am – 4pm

### Teddington School

10am – 4pm

### 3 Acorns Retro Eco – house

10am – 5pm

### 10 Triton Street & Regent's Place Estate

10am – 5pm

### 39 Parkholme Road

PREBOOKING REQUIRED (page 15)

10am – 5pm

### Angel Building

10am – 5pm

### Bennetts Associates Architects

10am – 5pm

### CityWest Homes Retrofit for the Future Home

PREBOOKING REQUIRED (page 15)

10am – 5pm

### City of Westminster College

10am – 5pm

### Claredale Street

10am – 5pm

### Child Graddon Lewis studios

10am – 5pm

### Ed's Shed/Sunken House

10am – 5pm

### Holy Trinity CE Primary School

10am – 5pm

### Lee Valley Athletics Centre

10am – 5pm

### LSBU K2 Building

10am – 5pm

### Mayville Community Centre

10am – 5pm

### Northbury Junior School Extension

10am – 5pm

### Mulberry Crescent

10am – 5pm

### Queens Park Low Carbon Zone

PREBOOKING REQUIRED (page 15)

10am – 5pm

### Sponge Trail of Eco – Buildings

10am – 5pm

### St Ann's School

10am – 5pm

### Child Graddon Lewis

10am – 5pm

### Thames Chase Forest Centre

10am – 5pm

### The Coach House

PREBOOKING REQUIRED (page 15)

10am – 5pm

### The Richard Cloudesley School

10am – 5pm

### The Sutton Life Centre

10am – 5pm

## Tree House

10am – 5pm

## Vittoria Primary School

10am – 5pm

## Zero Carbon Loft

PREBOOKING REQUIRED (page 15)

10am – 5pm

## Kilburn Grange Park Adventure Playground

1pm – 5pm

## The Gower School

1pm – 5pm

## Little Venice Sports Centre

10am – 5.30pm

## Chandos East Community Centre

11am – 3pm

## Ravensbourne

11am – 3pm

## The Elmgreen School

11am – 4pm

## 74 Amhurst Road

11am – 6pm

## Sunday

### The Hub – Regent's Park Sports Pavilion

9am – 5pm

### Stratford Circus

10am – 1pm

### Zero Carbon Loft

PREBOOKING REQUIRED (page 15)

10am – 1pm

### 3 Acorns Retro Eco – house

10am – 5pm

### 10 Triton Street & Regent's Place Estate

10am – 5pm

### 49 Camberwell Grove

10am – 5pm

### Ed's Shed/Sunken House

10am – 5pm

### 100 Princesdale Road

PREBOOKING REQUIRED (page 14)

10am – 5pm

### Armour Close

10am – 5pm

### Bygrove Primary School

10am – 5pm

### Claredale Street

10am – 5pm

<b>Growing Communities' Eco Classroom</b> 10am – 5pm
<b>Lee Valley Athletics Centre</b> 10am – 5pm
<b>Mayville Community Centre</b> 10am – 5pm
<b>Mulberry Crescent</b> 10am – 5pm
<b>One Bishops Square</b> 10am – 5pm
<b>Thames Chase Forest Centre</b> 10am – 5pm
<b>The Coach House</b> PREBOOKING REQUIRED (page 15) 10am – 5pm
<b>Tree House</b> 10am – 5pm
<b>Vittoria Primary School</b> 10am – 5pm
<b>Little Venice Sports Centre</b> 10am – 5.30pm
<b>Child Graddon Lewis studios</b> 12noon – 5pm
<b>199 Southwark Bridge Road</b> 1pm – 5pm
<b>Angel Building</b> 1pm – 5pm
<b>Kilburn Grange Park Adventure Playground</b> 1pm – 5pm
<b>Walter Segal self – build house with eco – refurbishment</b> 1pm – 6pm

PLEASE SEE pages 6 – 15 for full details of the programme from Monday to Thursday and for details of how to book.

<b>Monday</b>
<b>Green Sky Thinking launch breakfast - INVITATION ONLY</b> 8.30am – 10.30am
<b>'Occupying Streets at all Hours' workshop</b> 12pm – 3pm
<b>'Up on the Roof'</b> 2.00pm – 5.00pm
<b>Refurbishment of 199 Bishopsgate</b> 4.00pm – 5.30pm
<b>AECOM</b> 6.30pm – 8.30pm
<b>Aedas</b> 7.00pm – 9.00pm
<b>Tuesday</b>
<b>Retrofitting Sustainability in Modern Office Buildings</b> 8.15am for 8.30am – 10.00am
<b>Engaging People in the Retrofit process</b> 9.00am – 1.00pm
<b>Green Structures</b> 10.00am – 3.00pm
<b>BDSP Partnership</b> 11.00am – 1.00pm
<b>Jerry Tate Architects</b> 3.30pm – 6.00pm
<b>Preparing for the Retrofit challenge; Gearing up to exploit the opportunities</b> 6.00pm – 9.00pm
<b>Wednesday</b>
<b>Sustainable Office Exemplar at 60 Threadneedle Street</b> 9.00am – 10.00am
<b>Sustainable retrofit in commercial buildings: Drivers and developments</b> 9.00am – 1.00pm
<b>Sustainable Office Exemplar at 60 Threadneedle Street</b> 10.00am – 11.00am
<b>Sustainable Communities at Regent's Place</b> 9.30am – 11.00am

<b>Nick Willson Architects</b> 9.30am – 1.00pm
<b>Green Structures</b> 10.00am – 3.00pm
<b>BDSP Partnership</b> 11.00am – 1.00pm
<b>Ash Sakula</b> 11.00am – 2.00pm and 6.00pm onwards
<b>Moixa Energy</b> 1.00pm – 4.00pm
<b>Improving the Fabric and Services – a whole house approach</b> 2.00pm – 5.00pm
<b>Duggan Morris Architects Ltd</b> 4.00pm – 6.30pm
<b>Studio Egret West</b> 6.00pm – 8.00pm
<b>PRP Architects</b> 6.00pm – 8.30pm
<b>Hawkins Brown</b> 6.00pm – 9.00pm
<b>Small Builder – Planning for the Low Carbon Retrofit challenge and opportunity</b> 6.00pm – 9.00pm
<b>Thursday</b>
<b>Site Breakfast at Siemens Urban Sustainability Centre</b> 8.30am – 10.00am
<b>Retrofit: – the next steps – Retrofit at scale</b> 9.00am – 1.00pm
<b>Green Structures</b> 10.00am – 3.00pm
<b>BDSP Partnership</b> 11.00am – 1.00pm
<b>Learning from practical experience; translating into future retrofit action</b> 2.00pm – 5.00pm
<b>David Morley Architects</b> 5.00pm – 7.00pm
<b>Penoyre &amp; Prasad</b> 6.00pm – 8.00pm
<b>Skills, Training and Accreditation for Low Carbon Retrofit</b> 6.00pm – 9.00pm
<b>Feilden Clegg Bradley Studios</b> 6.30pm – 8.30pm

**About Green Sky Thinking sponsors, supporters and partners**

**About the Institute for Sustainability**  
The Institute for Sustainability is an independent charity, led by a world class board representing UK industry, academia and the public sector, set up to accelerate the delivery of sustainable cities and communities. We work closely with partners to drive innovative and collaborative demonstration projects that identify practical solutions to creating greener and more prosperous places to live and work. We share the knowledge and learning from these and other projects to identify best practice, encourage investment and to actively support social and economic development.

**The FLASH programme**  
The Institute's FLASH programme, part-funded by the European Regional Development Fund (ERDF), aims to provide Small and Medium-sized Enterprises (SMEs) with the information and support to help to seize the commercial opportunities arising from the low carbon economy.

Working with a range of partners, FLASH offers exclusive access to learning from practical demonstration projects as well as the most recent and credible analysis and industry best practice. FLASH also gives SMEs the opportunity to make their own business operations more sustainable, including advice on how to reduce their carbon footprint and costs.

In 2011 Open-City has been working with the Institute for Sustainability to develop and deliver dedicated learning opportunities via site visits to retrofit exemplars for built environment professionals signed up to the Institute's FLASH programme. Open-City's Green Sky Thinking programme has been developed in conjunction with, and with the support of, the Institute for Sustainability's FLASH programme.  
<http://www.instituteforsustainability.org.uk/FLASH.html>

**European Regional Development Fund (ERDF)**  
The European Regional Development Fund (ERDF) is used to tackle regional disparities across Europe. Working on behalf of the Mayor of London, the European Programmes Management Unit (EPMU) at the Greater London Authority (GLA) is responsible for the administration of the 2007 to 2013 ERDF programme.

**The Architects' Journal**  
*The Architects' Journal* is the voice of architecture in Britain. We sit at the heart of the debate about British architecture and British cities, and form opinions across the whole construction industry on design-related matters.  
[www.architectsjournal.co.uk](http://www.architectsjournal.co.uk)

**The British Council for Offices**  
The British Council for Offices' (BCO) mission is to research, develop and communicate best practice in all aspects of the office sector. It delivers this by providing a forum for the discussion and debate of relevant issues. Sustainability interests are represented in the BCO by our Environmental Sustainability Group.  
[www.bco.org.uk](http://www.bco.org.uk)

**Institution of Civil Engineers**  
The Institution of Civil Engineers (ICE) was founded in 1818 to ensure professionalism in civil engineering. It represents 80,000 qualified and student civil engineers in the UK and across the globe. The ICE has long worked with the government of the day to help it to achieve its objectives, and has worked with industry to ensure that construction and civil engineering remain major contributors to the UK economy and UK exports.  
[www.ice.org.uk/london](http://www.ice.org.uk/london)

**Landscape Institute**  
The Landscape Institute is the professional body for landscape architects. It is an educational charity and chartered body responsible for protecting, conserving and enhancing the natural and built environment for the benefit of the public. It champions well-designed and well-managed urban and rural landscape. The Institute's accreditation and professional procedures ensure that the designers, managers and scientists who make up the landscape architecture profession work to the highest standards. Its advocacy and education programmes promote the landscape architecture profession as one which focuses on design, environment and community in order to inspire great places where people want to live, work and visit. The Institute provides services to assist members including support and promotion of the work of landscape architects; information and guidance to the public and industry about the specific expertise offered by those in the profession; and training and educational advice to students and professionals looking to build upon their experience.  
[www.landscapeinstitute.org](http://www.landscapeinstitute.org)

**LessEn**  
LessEn is a global initiative to demonstrate and engage individuals and organisations in lessening energy in non-domestic buildings. LessEn is based around networks, tools, campaigns and a website [www.less-en.org](http://www.less-en.org) (knowledge bank, case studies, blog and the world's first global energy map), to share best practice in building energy efficiency.  
[www.less-en.org](http://www.less-en.org)

**Urban Land Institute**  
ULI – the Urban Land Institute – is a non-profit research and education organisation supported by its members. Founded in Chicago in 1936, the institute now has over 30,000 members in 95 countries worldwide, representing the entire spectrum of land use and real estate development disciplines and working in private enterprise and public service.  
ULI Europe: [www.uli.org/europe](http://www.uli.org/europe)

**UK Green Building Council**  
The UK Green Building Council (UK-GBC) is a membership organisation that is campaigning for a sustainable built environment – one that minimises negative environmental impacts while maximising benefits for people everywhere. That means we are concerned with homes and non-domestic buildings, both new and existing, and the infrastructure that binds them together. Launched in 2007 to offer clarity, cohesion and leadership to a disparate sector, we bring together anyone involved in the complex process of planning, designing, constructing, maintaining and operating buildings. A registered charity, we work with our members – who are mostly businesses, but also NGOs, government agencies and academic institutions – to deliver radical change.  
[www.ukgbc.org](http://www.ukgbc.org)

**World Green Building Week**  
World Green Building Week is held annually to highlight the importance of sustainable buildings for businesses, communities and individuals across the world. Every year, in the third week of September, international Green Building Councils and their members co-ordinate activities and hold events that reflect what sustainability means to them in relation to their specific built environments. From South Africa to Singapore and from Brazil to Australia, green buildings are put under the spotlight, green policy is debated and best practice is recognised. This year, World Green Building Week will be taking place from 19 – 23 September with the theme: 'Green buildings in the new green economy'.  
World Green Building Week events in the UK: [www.ukgbc.org/site/event/show-event-details](http://www.ukgbc.org/site/event/show-event-details)  
World Green Building Week events globally: [www.worldgbc.org](http://www.worldgbc.org)

**Green Sky Thinking Supporter**  
SJ Berwin [www.sjberwin.com](http://www.sjberwin.com)

**Open-City Corporate Scheme Members**  
British Land [www.britishland.com](http://www.britishland.com)  
Derwent London [www.derwentlondon.com](http://www.derwentlondon.com)  
Hammerson [www.hammerson.com](http://www.hammerson.com)  
ING Media [www.ing-media.com](http://www.ing-media.com)  
Lend Lease [www.lendlease.com](http://www.lendlease.com)

**Green Sky Thinking is part of the London Design Festival 2011**  
[www.londondesignfestival.com](http://www.londondesignfestival.com)

## About Open-City

Open-City is London's leading independent, non-profit built environment organisation. It champions the value of well-designed places and spaces in making a liveable and vibrant city and the role everyone plays within it. Open-City highlights the importance of 'designing in' sustainability, not just for individual buildings but also across neighbourhoods, communities and the wider city.

[open-city.org.uk](http://open-city.org.uk)  
[artintheopen.org.uk](http://artintheopen.org.uk)  
[mycitytoo.org.uk](http://mycitytoo.org.uk)  
[openhouselondon.org.uk](http://openhouselondon.org.uk)

# Open — City

Opening eyes,  
minds and doors

44-46 Scrutton Street  
London EC2A 4HH  
Phone +44 (0)20 7380 0412  
Fax +44 (0)20 7377 6972  
[open-city.org.uk](http://open-city.org.uk)

## Contact

Sarah Yates:  
[syates@open-city.org.uk](mailto:syates@open-city.org.uk)  
Special Projects Manager



## Institute for Sustainability

Open Practice Sponsor: The Institute for Sustainability's FLASH programme

European Union



European Regional  
Development Fund  
Investing in your future

Media Partner



## Institution Supporters



**ice**  
Institution of Civil Engineers

**Landscape  
Institute**  
Inspiring great places



## Supporter

**sjberwin**



## Open-City Corporate Scheme Members



# greenskythinking.org.uk

© Green Sky Thinking 2011

Open-City is an  
architecture organisation  
[open-city.org.uk](http://open-city.org.uk)